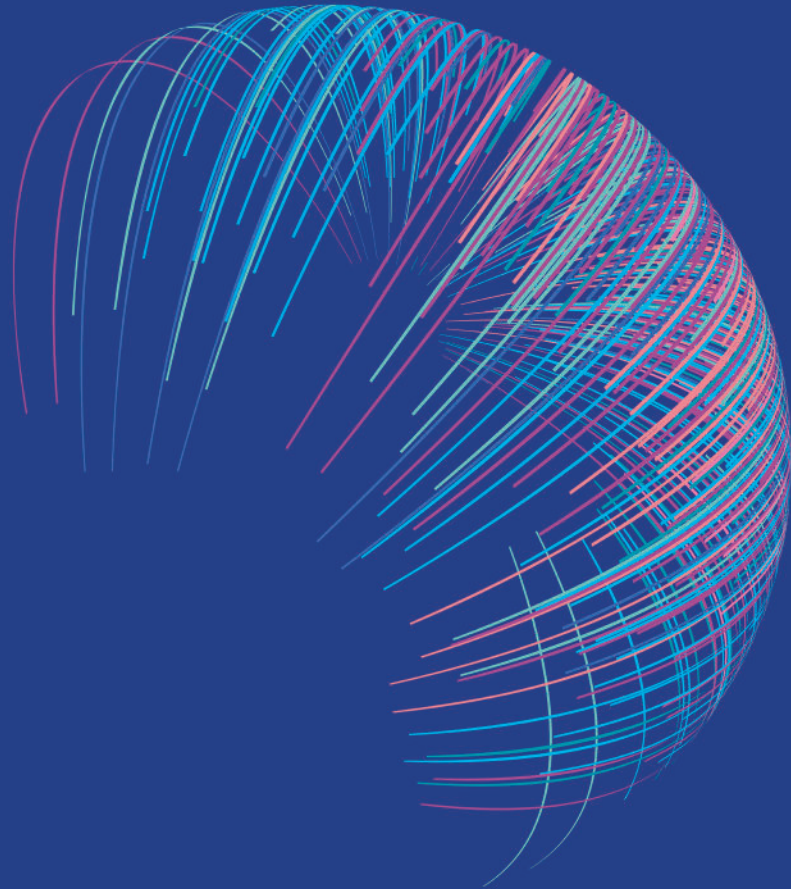


Princeton Digital Group

Internet Infrastructure



SHANGHAI, FENGXIAN **SH1**

Fengxian is a district in the south of Shanghai - the second largest city in China and the largest city in East China. As the economic center of the country, many large internet companies and financial services are headquartered in this level-one telecommunications backbone node. As the demand for data center services continues to rise PDG's Fengxian facility is well positioned in a strategic location with reliable electricity supply and major telecommunications providers to support hyperscalers and enterprise customers looking to expand in the Yangtze River Delta and East China.

PDG's SH1 is one of the largest data center campuses in Shanghai. Easily accessible from major airports and railway stations, the independent campus is built on PDG-owned land properties occupying 54,700m² in total land space with a capacity of 42MW. The project comprises of 3 data center buildings and 1 office tower onsite, offering high quality data center services to customers at home and abroad.

DATA CENTER OVERVIEW

Address: _____ No. 111, Lane 3111, West Huancheng Road, Fengxian District, Shanghai

Latitude/Longitude: _____ 30.946151, 121.437635

Gross Floor Area: _____ 84,000m²

Slab-to-slab Height: _____ DC1 5.5/6.5m; DC2 5.5/6.3m

Floor loading: _____ 12 kN/m²

Loading Bays: _____ 2

Staging Room: _____ available

Design PUE _____ 1.34

Data center, offices, and ancillary plant rooms in separate buildings

COOLING

- Primary-secondary pumping loop with variable flow
- N+1 1300RT cooled-water centrifugal chillers
- External cooling storage tank catering for continuous cooling for 15 minutes at full load
- Indirect evaporative cooling providing free and efficient cooling throughout the building
- CRAC units on 2N power supply (City power supply and UPS power supply)

TELECOMMUNICATIONS

- Carrier neutral network services, multiple service providers (China Telecom, China Mobile, China Unicom) and product offerings
- Two (2) diverse fiber entry vaults
- Two (2) Main Distribution Frame (MDF) rooms
- Two (2) Meet-Me-Rooms (MMR), diverse network distribution paths

ONSITE OPERATIONAL SUPPORT

- Secure storage and staging rooms available for use
- Office space available for BCP
- 24x7 onsite Remote Hands engineers
- 24x7 onsite critical facility management engineers
- Continuous monitoring of Building Management System (BMS) by the operations team
- Real-time monitoring and alarm notifications of all critical data center infrastructure

Princeton Digital Group

Internet Infrastructure

To get a first-hand look into any of our data centers, e-mail us at visitus@princetonondg.com for a guided tour.

POWER

- Battery Life: 15 minutes at full load
- Three (3) 35kV utility power supply and substations
- Diesel generators in 1+2 configuration, 1800KW (COP) each
- Fuel storage providing up to 12-hours of support at full load
- 2N UPS Configuration
- AC N+2 type terminal precision air conditioner using EC fan

SMOKE DETECTION AND FIRE SUPPRESSION SYSTEMS

- VESDA
- Point-type heat or smoke detection and electrical fire monitoring systems
- IG541 clean agent fire extinguishing devices in the Power Distribution Room
- Ultra-fine water mist fire extinguishing system in the Generator Room
- Pre-action fire sprinkler system in IT Room
- Sprinkler system available in public areas

SECURITY & ACCESS CONTROL

- 2FA data center security accessible by access ID and biometrics
- 2m high electronic fences (Active Infrared Intruder Detectors) around the park
- 24x7 onsite security personnel at the two main entrance and exit gates
- 24x7 comprehensive CCTV coverage with no blind spot
 - Recordings kept for 90 days
 - All monitoring systems supplied with dual power with no single failure point
 - Video management system equipped with failover redundancy network video recording server

ACCREDITATIONS

- ISO9001
- ISO20000
- ISO22301
- ISO27001